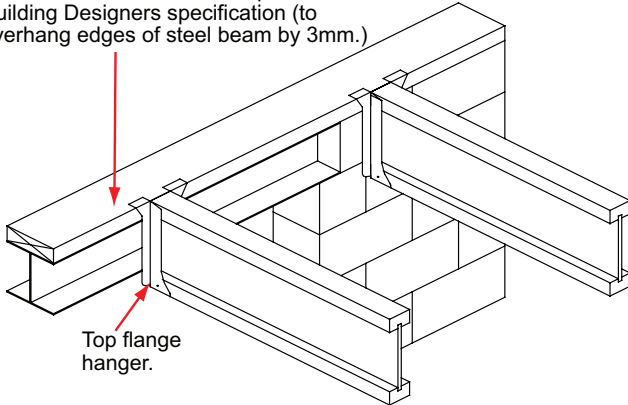


F15 Support at steel beam (top flange hanger on timber plate).

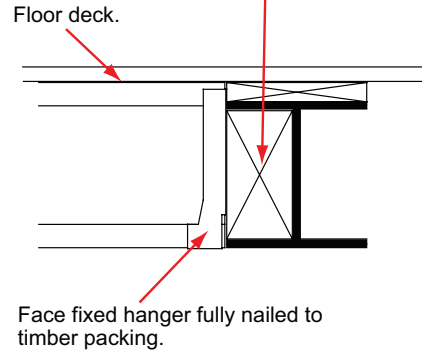
35mm thick minimum timber plate to Building Designers specification (to overhang edges of steel beam by 3mm.)



Top flange hanger.

F15a Steel beam support within floor (face fixed hanger with timber packing).

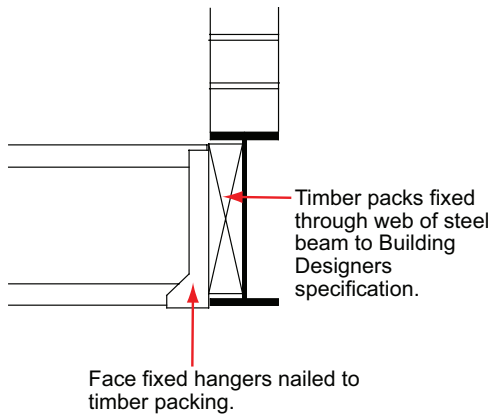
Steel beam to be packed with C16 timber and fixed to Building Designers specification.



Floor deck.

Face fixed hanger fully nailed to timber packing.

F15b Steel beam support at edge of floor (face fixed hanger with timber packing).

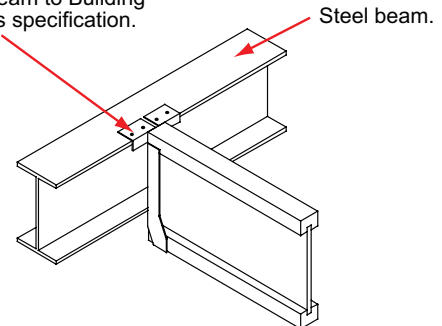


Timber packs fixed through web of steel beam to Building Designers specification.

Face fixed hangers nailed to timber packing.

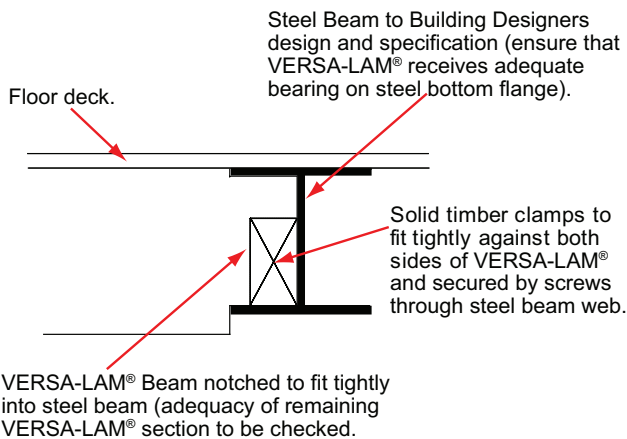
F15c Steel beam support (masonry hanger shot fired to steel).

Masonry hanger shot fired to top of steel beam to Building Designers specification.



Steel beam.

F15d VERSA-LAM® notched into steel beam.



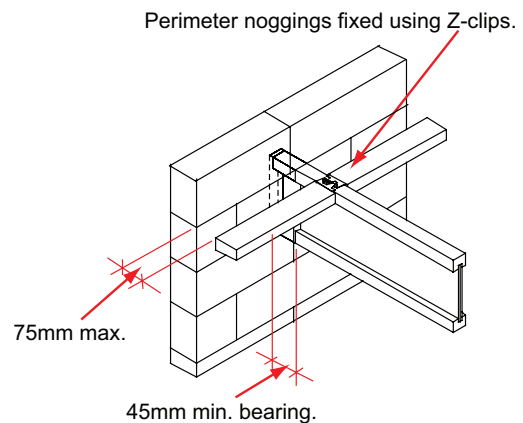
Steel Beam to Building Designers design and specification (ensure that VERSA-LAM® receives adequate bearing on steel bottom flange).

Solid timber clamps to fit tightly against both sides of VERSA-LAM® and secured by screws through steel beam web.

Floor deck.

VERSA-LAM® Beam notched to fit tightly into steel beam (adequacy of remaining VERSA-LAM® section to be checked).

F16 Perimeter nogging (timber).



Perimeter noggings fixed using Z-clips.

75mm max.

45mm min. bearing.

Note: Building Regulations require 90mm minimum bearing to provide wall restraint.