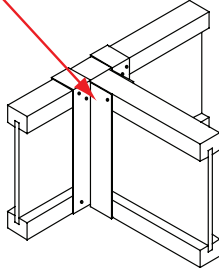


## F11c

No backer block required (Cullen UI or HUI hanger).

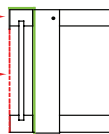
UI or HI Hanger fixed using 3.75x30mm square twist nails through all holes.



Backer blocks are not required when UI or HI hangers are used.

UI hanger has only top chord return flange.

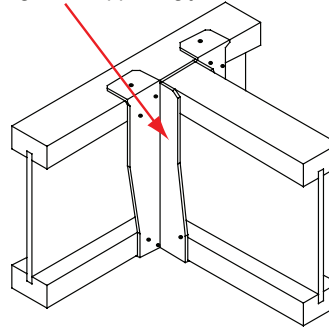
HI hanger has full depth return flange.



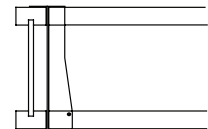
## F11d

No backer block required (Simpson Strong-Tie ITB hanger).

ITB Hanger fixed using a minimum of 12-No 3.75x30mm square twist nails into flanges of supporting joist.

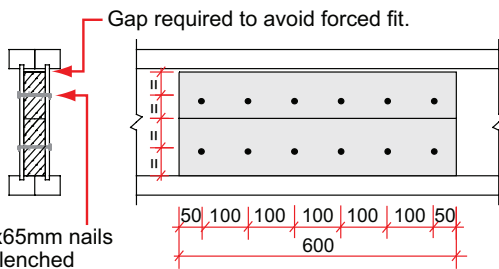


Backer Blocks are not required when ITB hangers are used.



## F12

Filler block (fixing and specification).



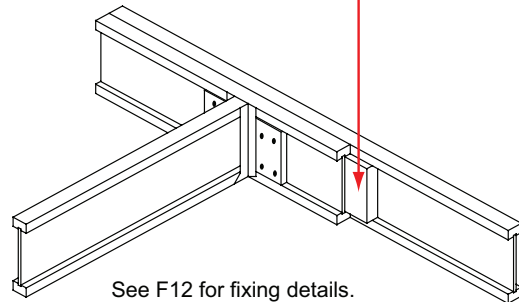
3.35x65mm nails clenched

Series	Filler Block Thickness	Depth	Filler Block Depth
5000s	40mm Timber	241mm	147mm
6000s	47mm Timber	302mm	97mm + 122mm
6500s	53mm Timber	356mm	122mm + 147mm
60s	47mm Timber	406mm	147mm + 172mm
90s	75mm Timber		

## F12a

2-ply BCI® filler block.

Fix 2-ply BCI® Joists together using filler blocks at all bearing points, at incoming load positions, and at max 3.6m centres (see F12b).

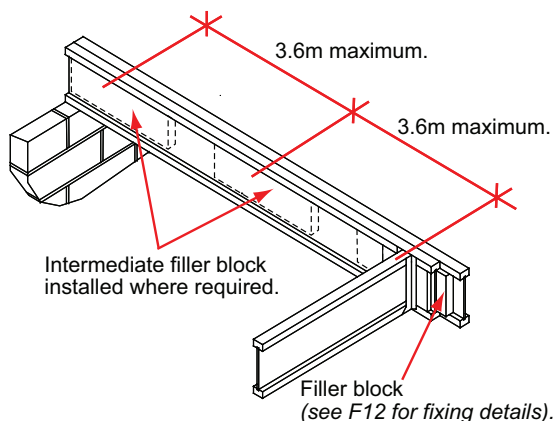


See F12 for fixing details.

## F12b

Filler block (short length option).

Note: Maximum spacing between filler blocks to be 3.6 metres. Intermediate filler blocks should be installed between bearing and incoming load positions.



## F12c

Filler block (full length option).

Note: A continuous filler and backer block should be considered where numerous incoming joists occur. (See F11b and F12 for fixing details.)

